

cat. no. 108.92

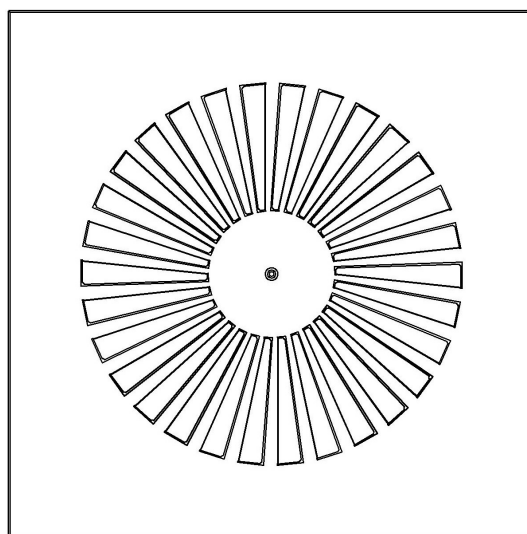
Filtration attachments

## CEILING SWIRL DIFFUSORS

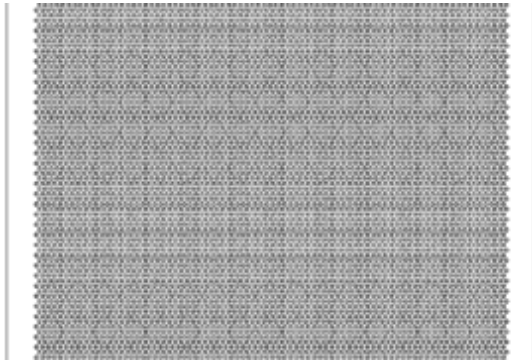


## PRODUCT DESCRIPTION

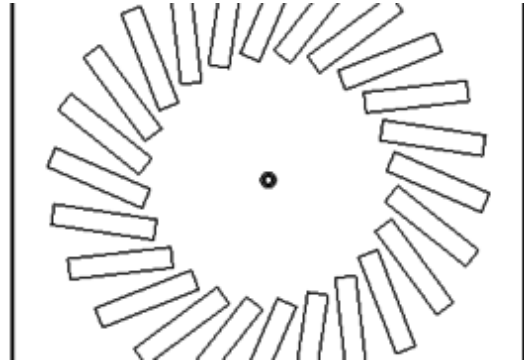
The outlet elements are used to distribute the air to the room. Most often, swirl diffusers are used, which allow a rapid reduction of the flow rate of the supplied air and its even mixing with the air in the room. Perforated sheet metal is used for free and even air supply to the room.



Swirl diffuser BLOCK for filter 457 mm with 30 fixed air control blades



Perforated sheet



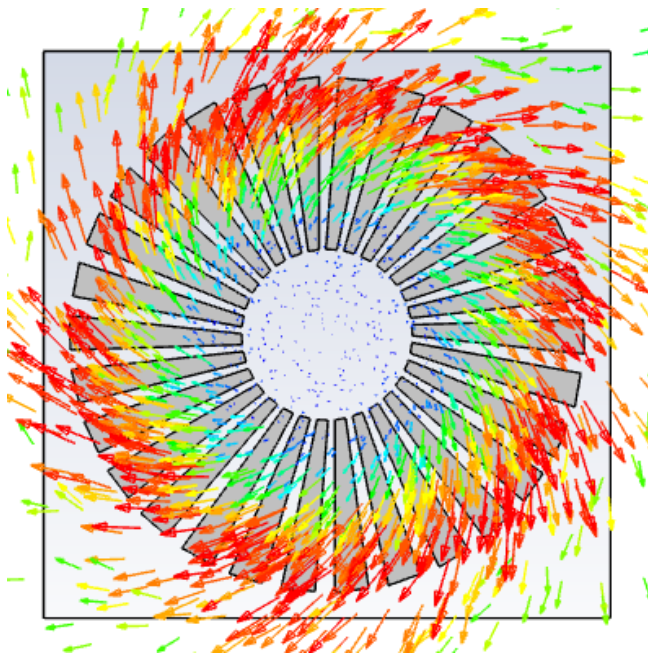
TROX diffuser

## CEILING MOUNTING

- The standard attachment of the output element is by means of a central screw, which is anchored to the cross member located in the housing of the attachment.
- The size of the attachment depends on the size of the filter and its bearing surface.

## BENEFITS

- color resistance
- corrosion protection



*Air flow through the Block diffusor*

## SUITABLE FOR AREAS

- Pharmacy, biotechnology, medical devices
- Microelectronics, optics, automotive, electrical engineering
- Healthcare
- Engineering, food, chemical industry, etc. industry

## TECHNICAL DATA

### Type

Ceiling swirl diffusers

### Type of HVAC attachment

extension to a light metal ceiling with a grid of 625 mm

extension to the panel ceiling

### The size of the filter in the attachment

attachment without filter

filter 305×305 mm

filter 475×475 mm

filter 570×570 mm

### Exhaust element

swirling diffuser with fixed slats

swirling diffuser with manually adjustable slats

ceeling diffuser

perforated metal sheet

Swirling vent-grille BLOCK

Swirling vent-grille BLOCK

### Surface of the diffusers

Komaxit powder coating in RAL 9016

Stainless steel AISI304

Komaxit powder coating in RAL shade

### Atypical design

Type design

Atypical design

Type design

0 - Unique specification out of offered versions

Atypical design

Q - atypical design that cannot be uniquely specified by a code

## MORE INFORMATION, PHOTOS

