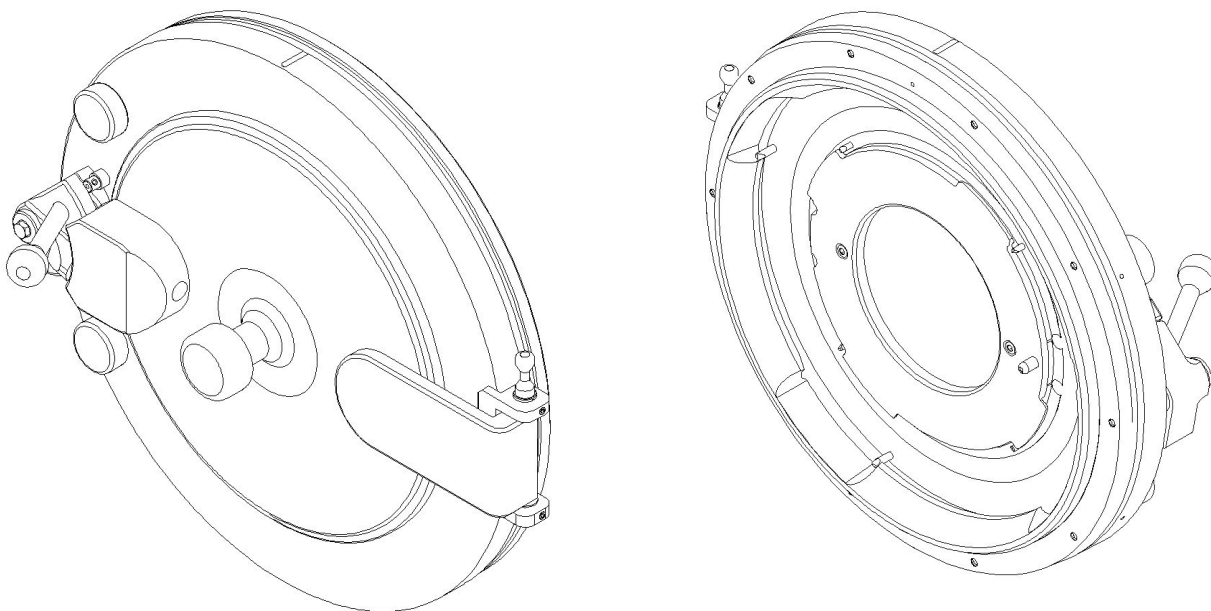
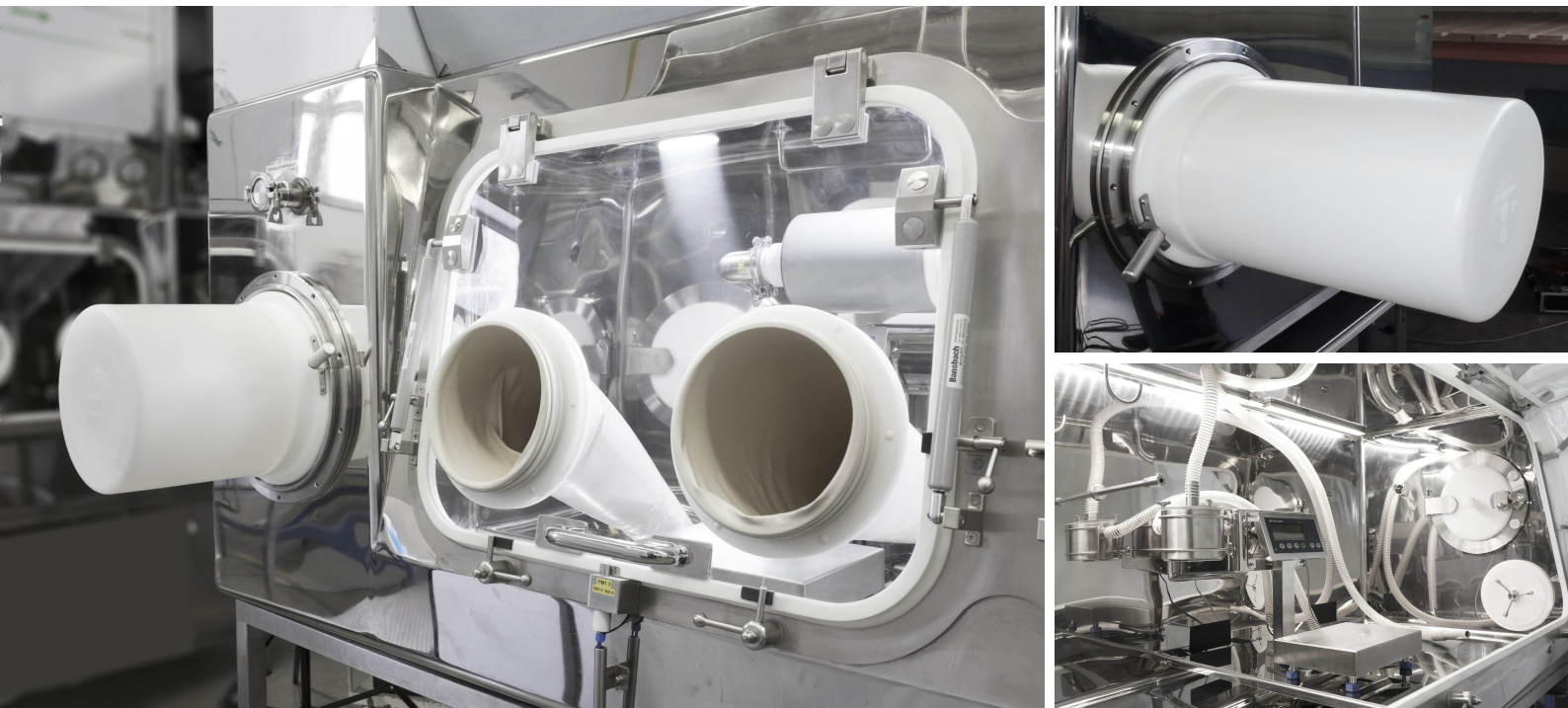


cat. no. 510.53

Isolator workplace

ALPHA PORT - RTP (RAPID TRANSFER PORT)



RTP (Rapid Transfer Port) is a device that is used to securely transfer material from the chamber to elsewhere, while preventing contamination of the product or the environment. RTP consists of two basic parts. Alpha port is fixed on the isolator chamber; Beta port, which is connected to Alpha port, is used as a container for material transfer. RTP is based on a double-door principle; the port into the container may not be opened until the Alpha and Beta ports are connected. RTP is often used for material output and transport or for the removal of solid waste from the chambers. The system comes in five standard sizes 105, 190, 270, 350 and 460 mm. The RTP system is

manufactured from materials that are resistant to multiple sterilization (autoclave, ethylene oxide, gamma sterilization, H₂O₂ sterilization, etc.).

The RTP system features the following safety systems to protect against accidental detachment:

- The Alpha door cannot be opened if the Beta container is incorrectly connected or placed.
- When the Alpha door is opened, the Beta container cannot be disconnected.

MORE INFORMATION, PHOTOS



TECHNICAL DATA

Type designation of port
Type designation of port

Selecting dimensional range
Alpha Ø105
Alpha Ø190
Alpha Ø270
Alpha Ø350
In this category, you can select the door size.