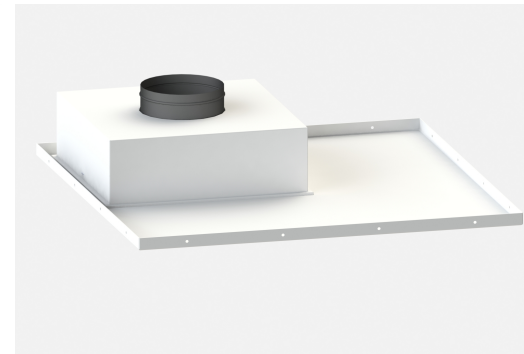
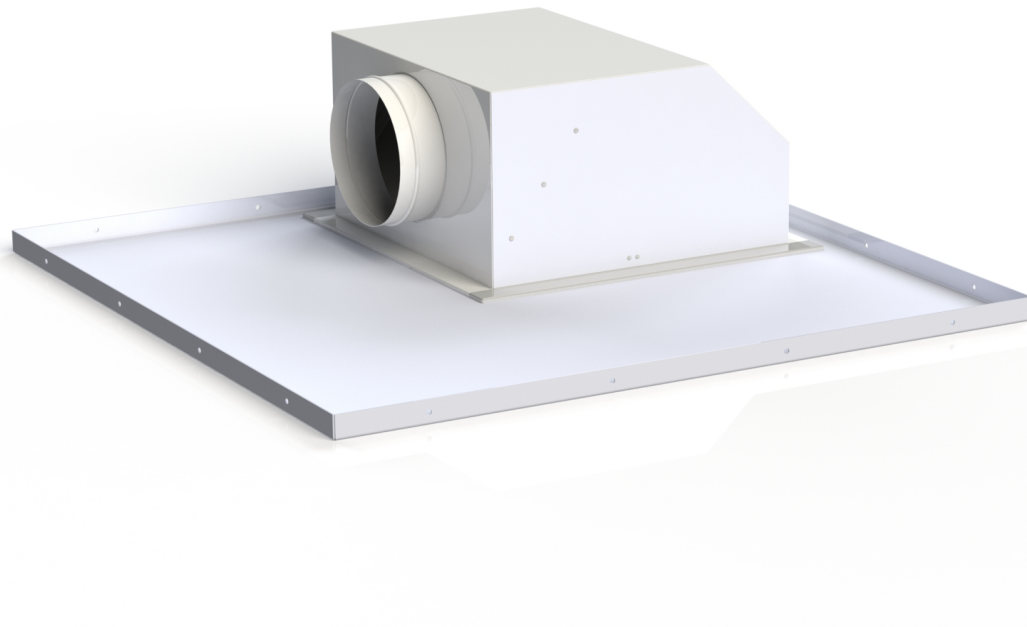


cat. no. 109.05

HVAC attachments and grilles

AIR CONDITIONING ADAPTERS FOR A WALK-THROUGH CASSETTE SYSTEM



Air conditioning adapters are intended as an end component of the air distribution system.

They are constructed as filterless, and their design allows for a wide range of applications.

The adapters are made into a walk-through cassette system 105.07.

To distribute incoming air, the adapters are fitted with a perforated metal plate or with a swirling vent-grille at the bottom; to distribute outgoing air, the adapters are fitted with a perforated metal plate at the bottom.

For air supply, they are provided with an inlet round neck - upper or side - as required by the customer and as the space allows.

MORE INFORMATION, PHOTOS



TECHNICAL DATA

Product type

HVAC adapters to be fitted in ceiling

Exhaust element

Swirl diffuser TDF

Swirl diffuser VDW

Ceiling diffuser DLQ

perforated metal sheet with a free surface of ~30%

innovated single-row swirling element - size to be determined by the HVAC designer according to flow

Air intake and orientation

exhaust side with round neck

exhaust side with round neck

exhaust side with round neck

exhaust side with round neck

exhaust upper with round neck

Size of inlet neck

round neck diameter 160

round neck diameter 200

round neck diameter 250

round neck diameter 315

Surface of adapter parts (inner surfaces and visible surfaces)

inner and visible surfaces - powder coating (Komaxit), standard hue RAL 9002, galvanized steel sheet

inner and visible surfaces - powder coating (Komaxit), standard hue RAL 9016, galvanized steel sheet

inner and visible surfaces - powder coating (Komaxit), hue RAL, galvanized steel sheet

Surface of exhaust element

powder coating (Komaxit), standard hue RAL 9002, galvanized steel sheet

Powder coating (Komaxit), standard hue RAL 9016, galvanized steel sheet

powder coating (Komaxit), hue RAL, galvanized steel sheet

Atypical design

Type design

Atypical design

Type design

0 - Unique specification out of offered versions

Atypical design

Q - atypical design that cannot be uniquely specified by a code